

CASCADIA 3C SERIES TIP AND ROLL SEATING



Tip and Roll for quick conversions

Sports fans can root for their favorite team in comfort with our new 3C Series Seating. The 3C Series Tip and Roll Bleacher Systems feature leading edge innovations in linear seating modules and bench seating. The 3C seat utilizes an architecturally appealing design that is safe, comfortable and provides great value and exceptional performance for both new installations and for upgrading existing seating. When play is over, simply tip the bleacher up onto the rubber casters and easily roll into storage position.



Seats feature fully radiused comfort shaped edges.

Our unique 3C Series Seating fastening method means you can install the seating modules quickly and easily. 3C Series Seating comes with double 10" wide foot planks. The first row of seating starts at 17" off the ground with 6" rise and 24" row spacing. Features include:

- Can be easily tipped up on its side and wheeled into storage area or secondary location.
- Standard double foot planks give spectators plenty of leg room. Single foot planks also available on request.
- Available in 2, 3 and 4 row configurations.
- Available lengths are 7'6", 9', 12', 15', 21' and 27'.

For outdoor applications, special features like drain holes assist in eliminating water pooling and expedite drying time after a downfall of rain.

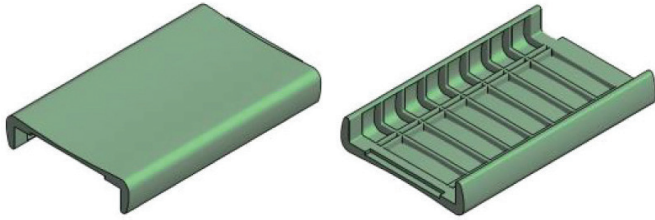
Standard colors are red, green, blue and black.

Custom colors are available.



Call today for size availability and pricing.

CASCADIA 3C SERIES RETROFIT



Gas assisted injection molded. PAT 103074-1 CA. PAT 103074-2 US.

Upgrade your current benches with our cost-effective, easy to install 3C Seat Modules. Our modules are manufactured using heavy-duty, high-density polyethylene (HDPE) and ergonomically designed with full radiused, comfort-shaped edges for maximum spectator comfort. Standard colors are red, blue, green and black. Custom colors are available.

3C Seat Modules are designed to fit on these understructure options:

1. Existing aluminum 2" x 10" bench.
2. Existing lumber 2" x 10"/12" bench.
3. Twin 1 1/2" x 1 1/2" galvanized steel tubing.

3C Seat Module

- 11 1/2" (292 mm) depth continuous comfort curve style bench seat module.
- Ergonomically full-radiused edges for enhanced spectator comfort and minimization of sensitive pressure point area, regardless of leg positioning.
- Fore and aft contoured seat surface for uniform support and minimize high pressure points under the buttocks.
- End caps at aisle end for clean, finished appearance.
- Optional recess pockets for seat number and row letters.

Each polymer seat is secured by two hidden clamp brackets that provide solid anchoring and eliminate fore/aft movement of the seat module on the support structure.

Seat Module Specifications

- 18" [457mm] long assembled, gas-assisted injection molded, high-density polyethylene (HDPE).
- Textured, scuff resistant 11 1/2" [292 mm] wide seat surface.
- 1/2" [12.5 mm] minimum seat interlock allows for expansion and contraction due to environmental conditions.
- Structurally tested to 600 lb occupant load assuming sufficient strength of the supplier framework.



3C Seat Modules are easy to install

- Begin installation work from right to left on each bench run. Using the supplied jig, install the first (4) locking wedges and fasten each wedge using supplied screws (TBD depending on under structure).
- Move jig to the left so that right-hand jig opening fits over the last locking wedge. Install next (2) wedges. Continue in this sequence moving left down to end of bench run.
- At the end of the bench, install last 2 (finishing wedges) left-hand jig opening with jig flush to the left end of bench (last 3C module on each bench shall have 4 locking wedges).
- Install all locking wedges on all benches in this manner.
- Start 3C module installation by placing along bench runs at approximately 15' intervals.
- Starting from the right side, snap on 3C Seat Module over the first (2) locking wedges by applying firm downward force evenly on both sides until module snaps over locking wedges.
- Continue in this manner along bench run.
- The last module on each bench may need to be cut to size. Measure and mark length desired with carpenter's square and pencil. Using a standard circular saw with 40 tooth carbide finishing blade, cut to desired length (end flush to bottom frame/bench).
- Once all 3C Seat Modules have been installed, end caps may be installed using (2) supplied screws/end.



Custom sport **solutions**

3012C Murray St. Port Moody, BC Canada V3H 1X2
(604) 461.5208 | Toll Free (888) 377.8000

cascadiasport.com